



Enterprise Reporting Solution

Argos 5.1 Release Guide

Product version 5.1

Last updated 6/27/2016

Trademark, Publishing Statement, and Copyright Notice

© 1998-2016 Evisions, Inc. All rights reserved.

This software and related documentation are provided under a license agreement containing restrictions on use and disclosure and are protected by intellectual property laws. No part of this document may be reproduced, stored in or introduced into a retrieval system, or transmitted in any form or by any means (electronic, mechanical, photocopying, recording, or otherwise), or for any purpose, without the express written permission of Evisions, Inc.

The information contained herein is subject to change without notice and is not warranted to be error-free. Product features referenced herein for a period of time may not match product contents. Evisions, Inc. does not warrant that the functions contained in the software will meet your requirements or that the operation of the software will be uninterrupted or error free. Evisions, Inc. reserves the right to make changes and/or improvements in the software without notice at any time.

This software and documentation may provide access to or information on content, products, and services from third parties. Evisions, Inc. and its affiliates are not responsible for and expressly disclaim all warranties of any kind with respect to third-party content, products, and services. Evisions, Inc. and its affiliates will not be responsible for any loss, costs, or damages incurred due to your access to or use of third-party content, products, or services. Evisions, Inc. does not endorse the content or developer of any products or web sites mentioned.

All information in this guide is designed for instructional purposes only. Evisions, Inc. makes no guarantees regarding the accuracy or performance of any techniques used in this guide. Software configurations and environments may vary, and some techniques used in this guide may not operate efficiently under all configurations. This guide may contain examples of various technologies or products, which are the sole property and responsibility of their creators.

Trademarks are the property of the respective owners for any products mentioned herein.

Table of Contents

What's New in Argos 5.1? **4**

 MAPS and Argos Updates 4

 Installation 4

 1. Prepare test environment and ensure current backup 4

 2. Check for updates 4

 3. Allow update process to complete 5

 4. Verify the latest version is installed 5

All Users **6**

 eLauncher Updates 6

Argos 5.1 Release Notes **7**

Getting Help **12**

What's New in Argos 5.1?

Evisions is pleased to announce the release of Argos version 5.1, which includes the following changes:

- ADO connections have been renamed to "data connections" throughout Argos and MAPS due to the addition of support for native database drivers for SQL Server and Oracle. Refer to the [MAPS 5.1 Release Guide](#) for details of how to configure the native drivers in MAPS if you wish to use them.
- Added several schedule-related fields to the Data Warehouse, including the days the schedule runs, its frequency, and the name of the printer for any scheduled print tasks.
- Added support for using schemas, tables, and columns that require brackets or quotes around their names in the visual designer.
- Updated the Argos logo to the new red Argos leaf throughout the product.
- When running a dashboard in the Argos client, keyboard focus now automatically goes to the first form object on the dashboard so you can start entering parameters without needing to click them first.
- Additional enhancements and resolved issues.

Changes to MAPS that relate to Argos include:

- The eLauncher has been redesigned to better reflect the new Evisions brand look and feel and make it easier to navigate.

We appreciate the feedback received from all of our users. Our products would not be what they are today without your continued support. If you have any comments or suggestions, please do not hesitate to [open a HelpDesk ticket](#) and let us know.

MAPS and Argos Updates

Some of the issues fixed in this release require an update to the MAPS service as well as to Argos. We recommend upgrading both products to the latest version concurrently.

Product versions

The latest versions of MAPS and Argos included in this release are:

- Argos mapplet 5.1.0.936/ Argos client 5.1.0.1370/ Web Viewer 5.1.0.3
- MAPS service 5.1.0.1290 / MAPS configuration 5.1.0.581 / eLauncher 5.1.0.14

Installation

[1. Prepare test environment and ensure current backup](#)

We highly recommend installing updates in a test environment before applying them to your production environment. You should make sure that a current backup is available in case of any unforeseen issues. To create a full backup of your MAPS environment, go to the **Server -> Backups** screen in MAPS and click **Backup Now**.

[2. Check for updates](#)

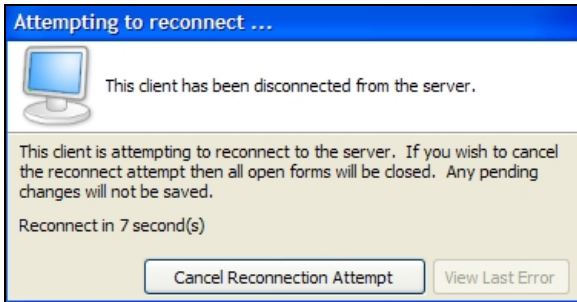
Click the **Check for Updates** button in the MAPS Configuration tool to view available updates.

If you are not already running Argos and MAPS 4.x, please refer to the [Argos 4.0 Release Guide](#) for instructions prior to proceeding with this upgrade.

It is possible to apply updates when users are on the system; however, to avoid the possibility of losing unsaved work we recommend applying updates during off hours.

3. Allow update process to complete

When applying updates to the MAPS service you will be temporarily disconnected from the server:



The update process may take a few minutes to complete. **Do NOT cancel the reconnection attempt or manually restart the server.** You will automatically be reconnected to the server once the update has been applied.

4. Verify the latest version is installed

To ensure that you are on the most current version, continue clicking the **Check for Updates** button and applying the updates until no new updates are available.

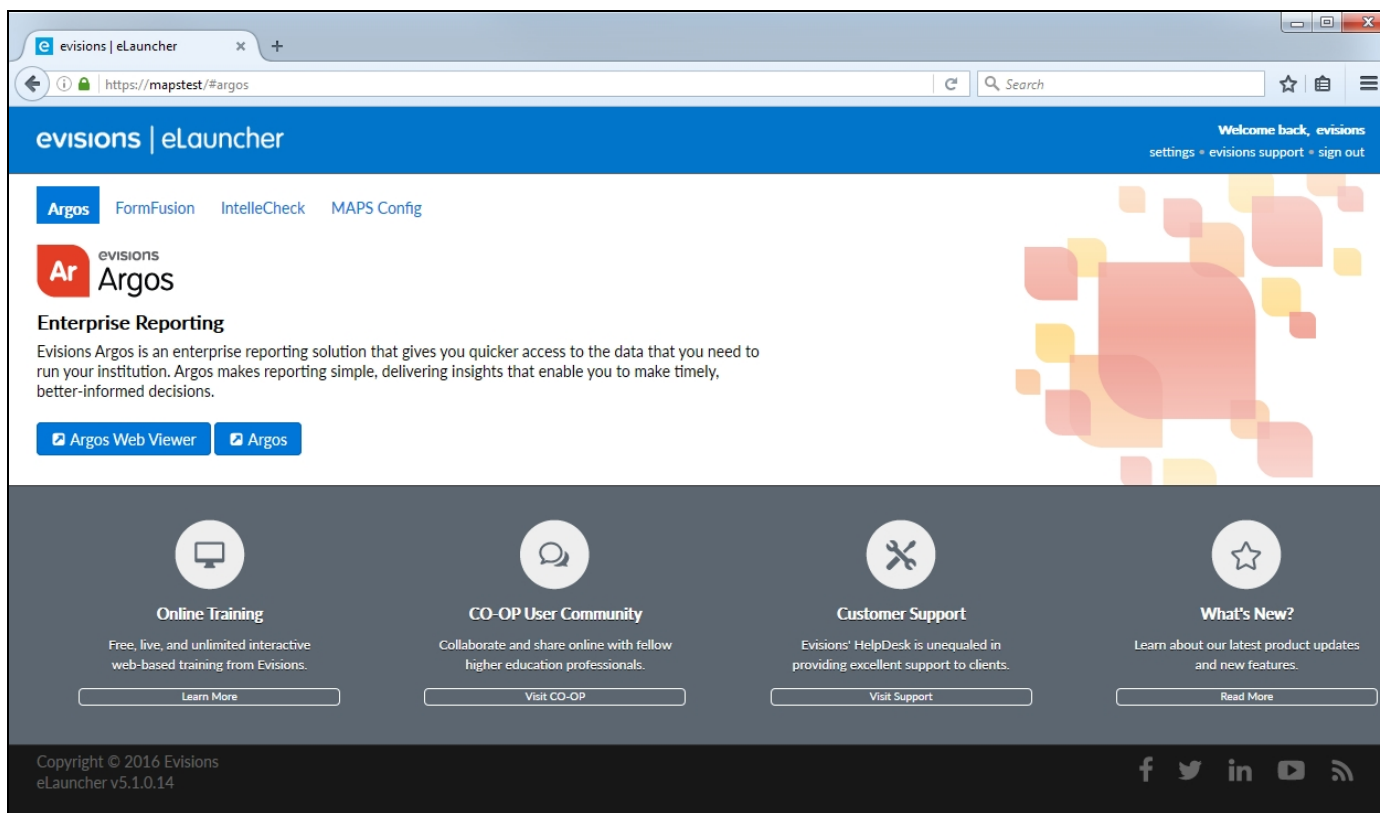
Please Provide Us with Your Feedback!

As always, we welcome any [feedback or suggestions](#) you may have. We very much appreciate your thoughts and suggestions, so please keep the great ideas coming!

All Users

eLauncher Updates

The eLauncher has been updated with a new look and feel, in line with the updates to Argos and the Evisions website. We have also updated the Evisions logo and the logos for all Evisions products.



There are no changes to the functionality of the eLauncher. If your MAPS server is configured to use a custom logo and color theme for the eLauncher, your customizations will remain in place.

Argos 5.1 Release Notes

Argos Mapplet 5.1.0.936/ Argos Client 5.1.0.1370/ Web Viewer 5.1.0.3
MAPS Service 5.1.0.1290 / MAPS Configuration 5.1.0.581 / eLauncher 5.1.0.14

Argos

Enhancements

Area	Description	Issue number
Banded reports	When using the SETCOLOR function in a banded report to alter the color of an object (text, shape, etc.) on a band, the color was being applied to that object on the following band, with the object in the first band receiving the color that should have been applied to the object in the last band. To resolve this issue, the banded report structure tree now includes an option to sort objects by execution order instead of alphabetically, and to move objects up and down into the desired order.	AR-1768
Connections	Renamed ADO connections to "data connections" throughout the product as part of the support for native database drivers, which can be used as an alternative to ADO connections for SQL Server and Oracle databases.	AR-4196
Connections	Renamed the "Edit ADO Options" dialog to "Query Properties" due to the addition of support for native SQL Server and Oracle drivers. The dialog now contains options specific to each database driver (ADO, MSSQL, and Oracle).	AR-4212
Dashboards	Updated the icons in the Dashboard Options toolbar that appears at the top of the dashboard in the Argos client to be consistent with the new Argos user interface.	AR-4120
Dashboards	When running a dashboard in the Argos client, keyboard focus now automatically goes to the first form object on the dashboard (or the form object with the lowest Tab Order property) so that users can begin entering parameters without needing to click into the dashboard first.	AR-3792
Data Warehouse	Added the DaysOfWeek, Frequency, and FrequencyAmount fields to the Schedule table in the Data Warehouse.	AR-2651
User interface	Updated the CSV report icon used in the explorer tree to make the text easier to read.	AR-4070
User interface	Dashboards with multiple tabs did not have any separation between the tabs, making it difficult to read the tab names.	AR-4106
User interface	Updated the Argos logo to the new red Argos leaf throughout the product.	AR-4066
User interface	System messages that display at the top of Argos upon login now have a colored border instead of a colored background to make it easier to read the messages and to see the red X button that closes the message bar.	AR-4067
User interface	Updated the icons on the Revision Manager dialog to reflect the new Argos look and feel.	AR-4029
User interface	When editing a sub query in the visual designer, increased the amount of space between the comparison operators on the WHERE tab so that they are easier to read.	AR-4177

Resolved Issues

Area	Description	Issue number
Banded reports	The label for the Designed DPI dropdown at the bottom of the banded report editor was being truncated due to the dropdown overlapping the label.	AR-4114
Banded reports	Attempting to copy a group header band and then paste it into another group header or detail band was resulting in an access violation.	AR-3772
Data Dictionary	When editing the report query in the visual designer, the "Add Join" button would stay in the selected state after adding a table join when the Data Dictionary was enabled.	AR-3678
Localization	When switching languages in the Web Viewer, the Search button would expand to cover up part of the search bar if the word for "Search" in that language requires more space than the word "Search" does in English.	AR-4125
Messages	In Argos 5.0, any system messages that appeared at login were being truncated to 256 characters.	AR-4129
OLAP	Saved OLAP settings were not saving the sort order of the data within each column.	AR-3602
OLAP	Loading saved settings for an OLAP cube sometimes altered the order of the cube measures.	AR-2904
Permissions	Report viewers were able to type in a new name for a folder by double-clicking in the name or by pressing F2 when the folder was selected, even though they do not have permission to rename Argos objects and would receive an error upon clicking out of the edit box. Double-clicking on a folder or pressing F2 now does nothing if the user does not have the ability to rename it.	AR-4025
Queries	When adding schemas, tables, or columns in the visual designer, if a schema/table/column name required quotes or bracket notation due to spaces or special characters in the name, then the visual designer would omit the delimiter from the query, resulting in a syntax error. As part of the resolution for this issue, a new connection property has been added to the Edit Connection dialog in MAPS to control which character should be used as the delimiter for specific data connections.	AR-3659
Queries	Refreshing the table schema in the visual designer was removing any aliases defined for the table.	AR-4198
Reports	When editing the name of a report within the Edit Report dialog, the report name was incorrectly being limited to 64 characters. The Edit Report dialog now allows for report names up to 255 characters in length, which is the maximum for all Argos objects.	AR-3696
Saved settings	When a user created a saved dashboard setting that had the same name as a saved dashboard setting that was shared by another user, Argos was loading the shared setting instead of the user's own setting.	AR-3697
Searching	Switching between the Explorer and Shortcuts now collapses the Search bar if the advanced search dropdown was expanded. This resolves an issue where the main screen would sometimes not update correctly when the search bar was expanded.	AR-4084
Stability	After copying a DataBlock but before pasting it, attempting to copy and paste text in a different application resulted in an error due to Argos locking the clipboard.	AR-4099

Area	Description	Issue number
Stability	Attempting to drag a shared shortcut into a folder under "My Shortcuts" or a private shortcut into a shared folder resulted in an access violation in the Argos client.	AR-4077
User interface	When right-clicking on a DataBlock and then right-clicking on a report (or vice versa) in the explorer tree, the items in the context menu would not display until the cursor was moved over each item.	AR-4072
User interface	When adding a sub query to the WHERE clause in the visual designer, the background of the dialog was white when it should have been gray.	AR-4213

Enhancements

Area	Description	Issue number
CAS	Added support for using LDAP group authentication when logging in through CAS, based on additional attributes supplied by the CAS server that contain the LDAP group information.	MAPS-80
Connections	In addition to ADO connections, MAPS now also supports using native database drivers for Oracle and SQL Server, which may improve performance and stability when using these databases. The ADO Connection screen in MAPS has been renamed to "Data Connections", and a new Driver Properties tab has been added to the Edit Connection dialog. When using a database other than Oracle or SQL Server, the database driver should be left as "ADO". You may also continue to use an ADO connection for Oracle or SQL Server if desired.	MAPS-1021
Data Warehouse	Added the StartDate, StopDate, and DeleteOnStop fields to the SysUser table in the Data Warehouse.	MAPS-1084
Data Warehouse	Added printer information for scheduled print tasks to the Data Warehouse via the ScheduleTaskProperty table. Print tasks now have an entry with ScheduleTaskProperty.Name set to "Printer" and the printer name in ScheduleTaskProperty.Value.	MAPS-1128
eLauncher	The DataMasque product will now only appear in the eLauncher if an institution has installed DataMasque.	MAPS-1150
eLauncher	The Evisions Application Launcher (EAL) is now the default launcher for new installations of MAPS. This avoids any issues with being unable to launch the MAPS Config when using browsers that no longer support Java.	MAPS-1119
eLauncher	Added a note to the Launch Page screen regarding color contrast accessibility when using custom color themes.	MAPS-1151
eLauncher	Updated the default theme for the eLauncher to use the new Evisions logo and brand colors. If you have configured a custom color theme or logo, these customizations will be retained.	MAPS-1053
eLauncher	Updated the link to the online training in the eLauncher to point to the new training page on the Evisions website.	MAPS-1178
Security	Improved the security of the session cookie used by the eLauncher and Argos Web Viewer by setting the "Secure" and "HTTPOnly" flags. These flags prevent the session information from being transmitted over an unencrypted channel or from being improperly accessed using JavaScript.	MAPS-812
Security	Updated MAPS to support version 1.0.1s and higher of OpenSSL. The latest version of OpenSSL that could be used with MAPS 5.0 and earlier was version 1.0.1r.	MAPS-1117
Security	Updated the OpenSSL .dll files packaged with MAPS to version 1.0.1t.	MAPS-1142
Users	Expanded the user import function to include several additional fields, such as the email address for LDAP users (previously only available for MAPS users), and the CAS ID. MAPS administrators can now re-import a user whose information has changed in order to update their record. We also added an Export function that exports the selected users to a CSV file for future import or other purposes. The export function allows administrators to choose which fields should be included in the file.	MAPS-530

Area	Description	Issue number
User interface	Updated the MAPS logo on the Server screen and at the top of the MAPS Config to be consistent with the new Evisions branding.	MAPS-1168

[Resolved Issues](#)

Area	Description	Issue number
CAS	When an LDAP user in MAPS was configured such that the user could log in with an associated CAS ID, and the user received permissions based on their group membership, the user was not granted any permissions that came from their group membership when logging in via CAS.	MAPS-898
Licensing	On the License -> Configuration screen, the client count was showing as "10000" when it should have been "unlimited".	MAPS-1114
Log files	When sending emails that included PDF attachments from FormFusion, the MAPS email log was omitting information such as the subject, content type, date, and body.	MAPS-1102

Getting Help

For information on using the software, please refer to the in-product Help, which contains detailed information on all aspects of the product.

If you are having problems with the installation or configuration, you can search our knowledge base of common issues and their resolutions at <http://helpdesk.evisions.com>. If you are unable to find the solution, submit a HelpDesk request with a detailed explanation of the problem you are experiencing.

Please do not hesitate to contact the Evisions HelpDesk if any questions or problems arise. We are here to help you and want to ensure your success.

If you find that areas of this documentation could benefit from additional detail or clarification, please let us know. We are constantly trying to improve the installation process to make it as easy as possible.